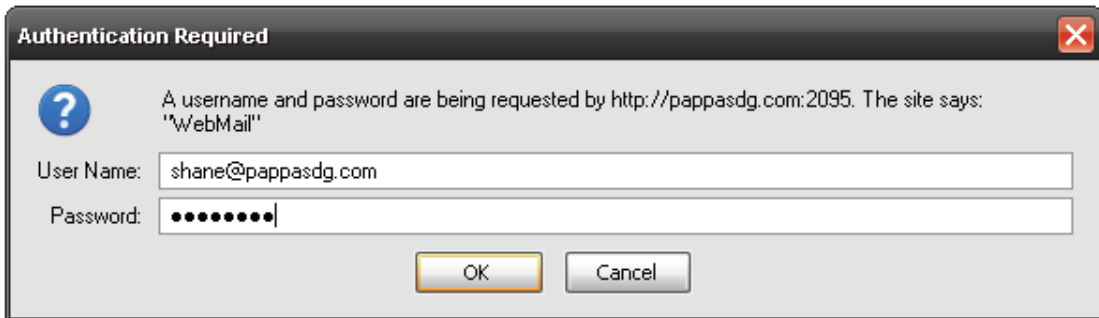


## PDG Webmail Access Instructions

### Getting into your Email from any Location with Internet Access.

1. Open your Web Browser (Internet Explorer, Mozilla Firefox, etc.)
2. Go to the Address Bar and type in "your website/webmail" and press enter. (example: pappasdg.com/webmail)
3. A Logon Box will open.
4. Put your email address as the user name and your email password as the password. Click OK



5. The PDG Console will open up. Clicking any of the three main choices (Horde, SquirrelMail, or RoundCube) will open up your email inbox. Try out all three programs and see which you prefer. Changes made (deleted Messages, etc.) will be across the board, so don't be afraid to try out all three!

